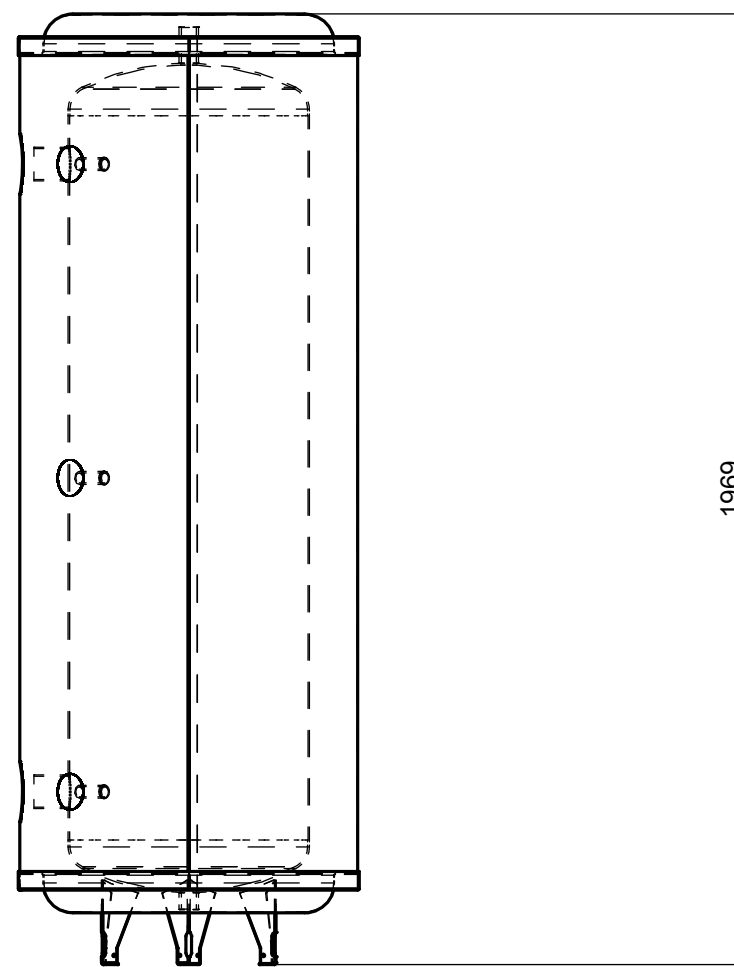
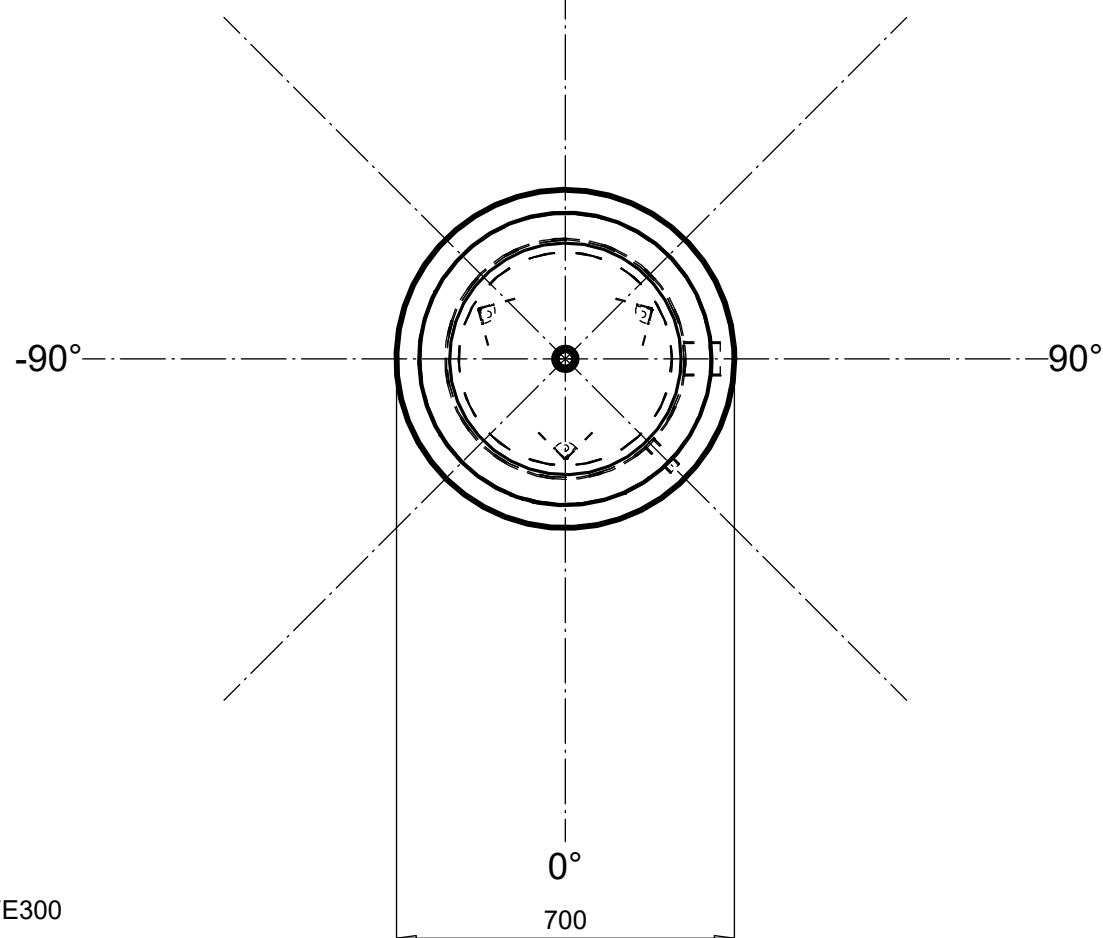
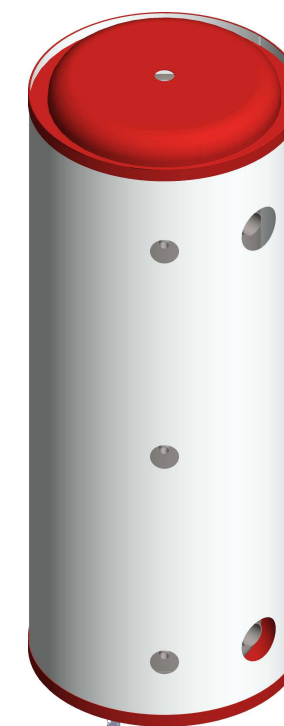


180°



1969



Technical information

- AKVA PRO 300-T9100300
- Max pressure 6 bar
- Max temperature 60 °C
- Material Carbon steel
- Insulation - Closed cell polyurethane
- Insulation thickness 100 mm
- Thermal losses 66W
- Energy class B
- Drain connection: DN25(1")
- Venting connection: DN25(1")
- Planned manufacturing series: 1 pcs
- Baffle plates - pc[s]:

Handling

- Cross measure: 2025 mm
- Weight (empty): 120 kg

Additional requirements

Components:

- C1 DN50 ST Socket -Normal
- C2 DN50 ST Socket -Normal
- C3 DN15 ST Socket -Normal
- C4 DN15 ST Socket -Normal
- C5 DN15 ST Socket -Normal

Surface finish and packing:

Main surface:  
Painted sheet metal  
Color: White

End cover  
ABS plastic cover  
Color: Red

Packing:  
Normal packing

KyIFE300

KyIFE300

This pressure vessel is designed and manufactured in accordance with the sound engineering practice of a Member State in order to ensure safe use. Welded joints are inspected in accordance to EN 5817 – Class C.

Drawn	2023-03-14	ENo
<b>AKVATERM</b>		
Kaarielankatu 21, 67100 Kokkola, Finland www.akvaterm.fi		



Metro Therm Ab  
FE300001-2